



## INSTRUCTIONS

# PS-65 PS-66

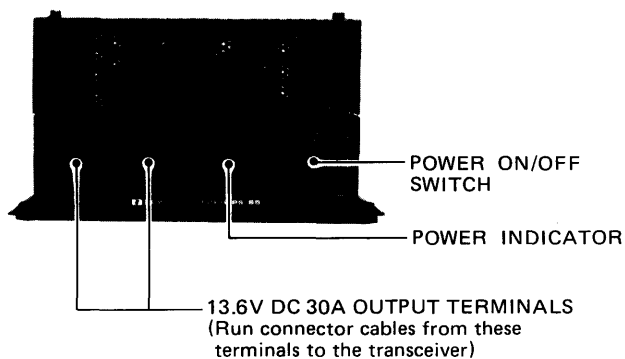
## DC-DC CONVERTERS

### INTRODUCTION

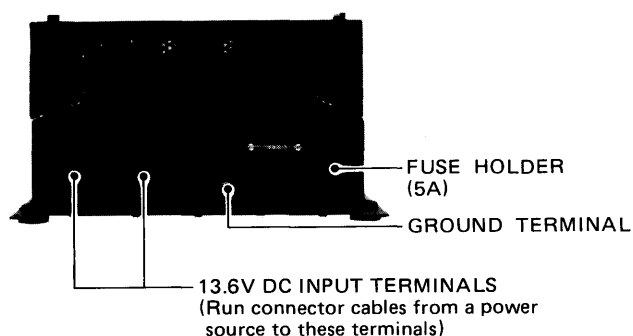
ICOM's new **PS-65** and **PS-66** DC-DC CONVERTERS reduce output voltage from the transceiver's power source and provide 13.6V, 30A of continuous power to the transceiver. The **PS-65** and **PS-66** incorporate a floating ground system between the converter's negative input and output terminals, ensuring operator safety through the prevention of electrical shocks.

### CONTROL FUNCTIONS

#### ■ FRONT PANEL

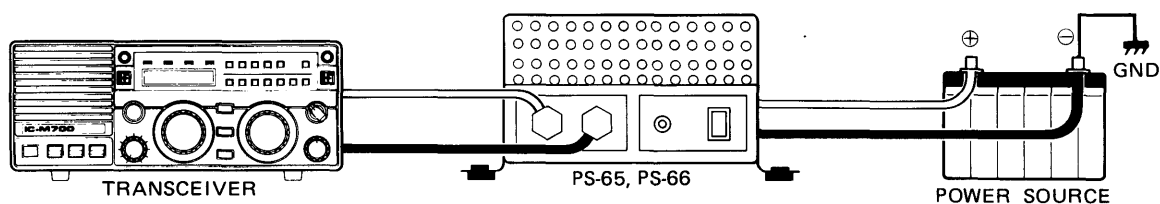


#### ■ REAR PANEL



### CONNECTOR CONNECTIONS

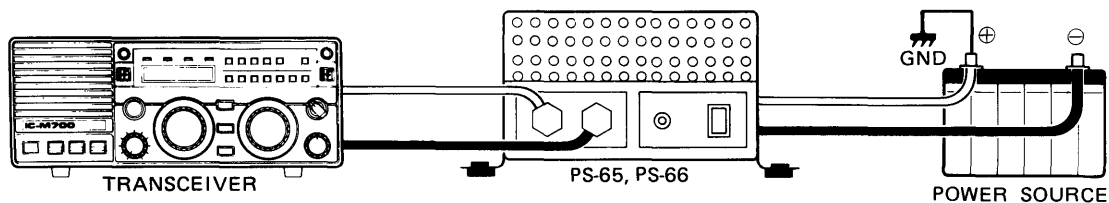
#### ■ NEGATIVE GROUND SYSTEM



Make connections as shown in the figure above in your boat or vehicle when:

- (1) the DC power source is **NEGATIVE** and the power source voltage is more than 13.6V DC, 30A.
- (2) a floating **GROUND** condition is required.

#### ■ POSITIVE GROUND SYSTEM



Make connections as shown in the figure above in your boat or vehicle when:

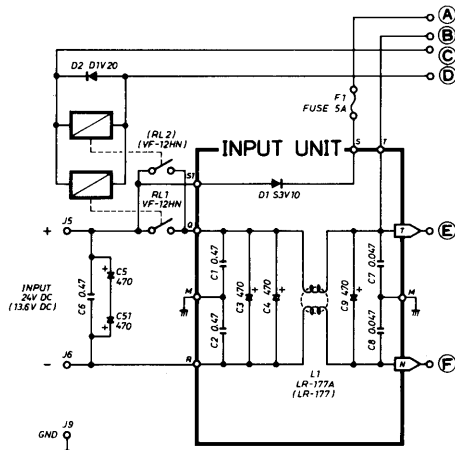
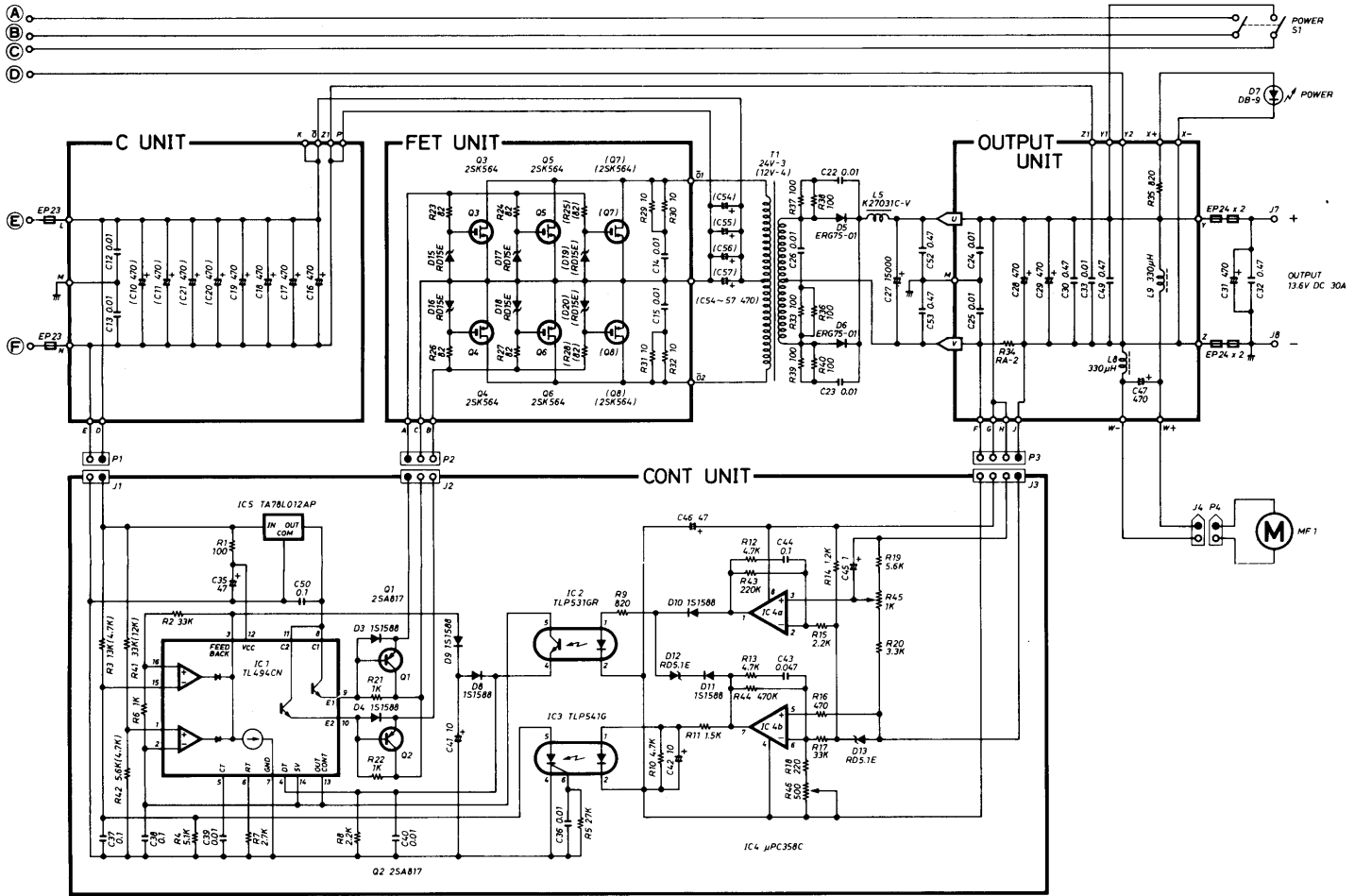
- (1) the DC power source is **POSITIVE** and the power source voltage is more than 13.6V DC, 30A.
- (2) a floating **GROUND** condition is required.

## SPECIFICATIONS

- Input voltage : PS-65 10.5 ~ 16V DC      • Dimensions : 240(290)W x 140(150)H x 322(392)D mm
- : PS-66 19 ~ 32V DC
- Output voltage : 13.6V DC                      • Weight : 7kg
- Max. current capacity : 30A                      • Usable temperature range : -30°C ~ +60°C

Note: Bracketed values for dimensions include projections.

## SCHEMATIC DIAGRAM



To upgrade quality, some components may be subject to change without notice.

**ICOM INCORPORATED**  
1-6-19, KAMIKURATSUKURI, HIRANO-KU,  
OSAKA 547, JAPAN